

LA LITHOTRIPIE ENDOVASCULAIRE

COMMENT ÇA MARCHE ?

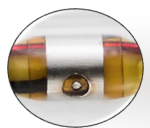
Avec le soutien institutionnel de

Le matériel

Ballon de 12mm semi-compliant

Marqueurs radio-opaques Proximal et Distal

2 émetteurs



Emetteur

1 pulse/s – Cycle de 10 pulses
Max 80 pulses

Cathéter

6 Fr sur 0.014"

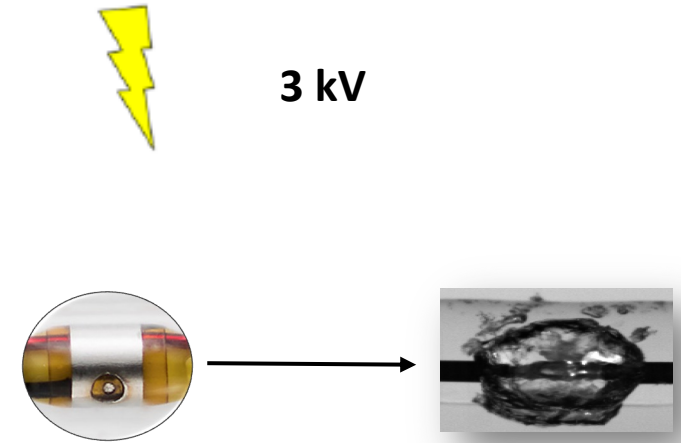
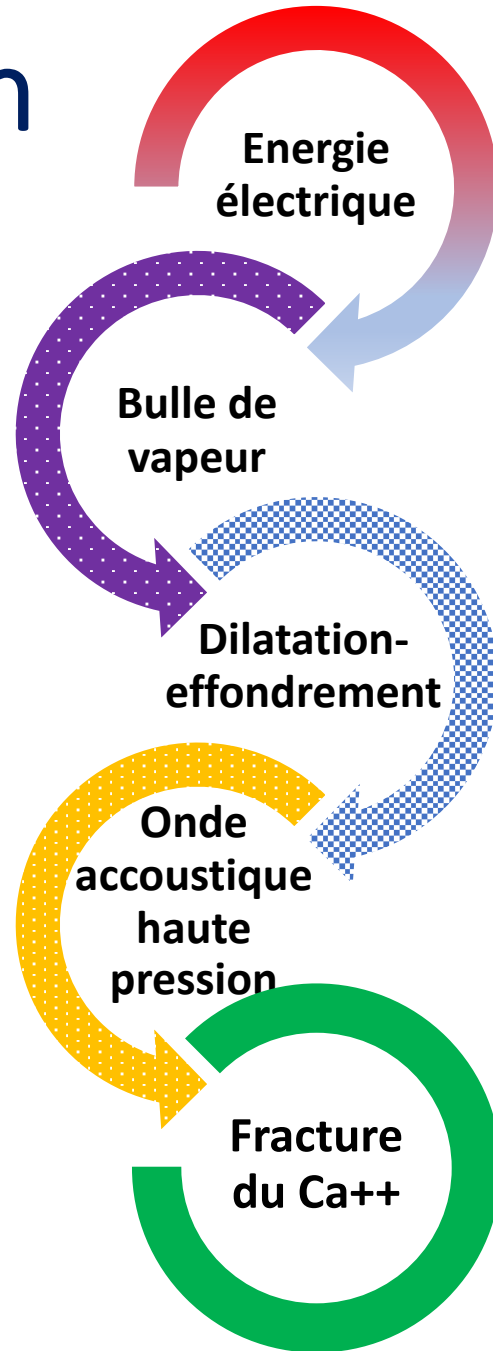
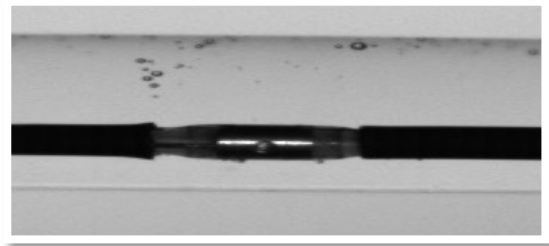


Générateur
Rechargeable / secteur

Connecteur
Plug magnétique

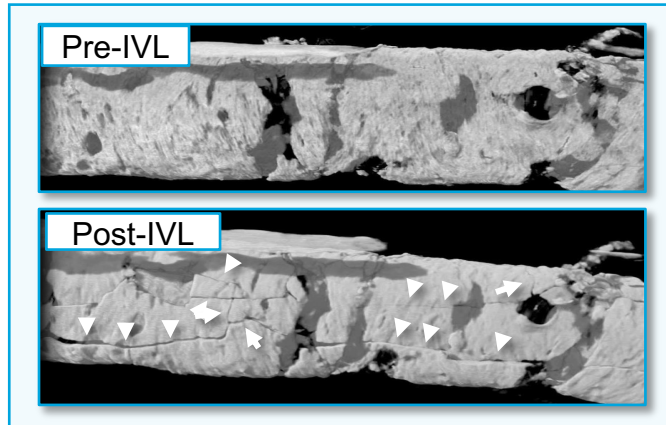


Mécanisme d'action



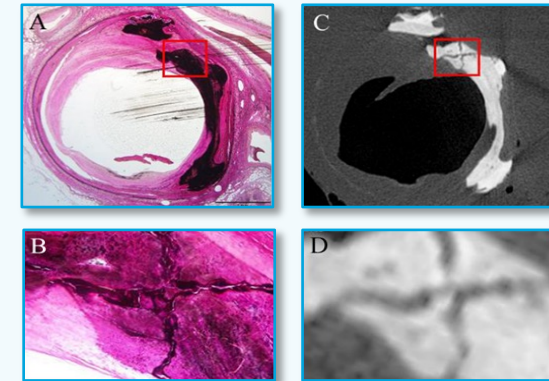
≈ 50 ATM
Profondeur: 3 – 7 mm

Résultats: les micro-fractures



Cadaveric Superficial Femoral Artery (Micro CT)

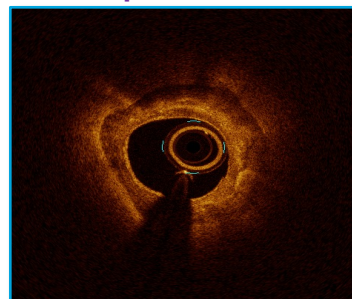
Histology (A,B) — Micro CT (C,D)



Courtesy: Renu Virmani

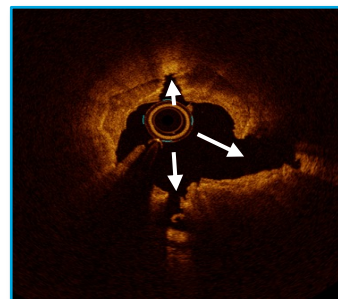
Histologic & Micro CT after IVL Treatment (SFA)

Pré-procédure



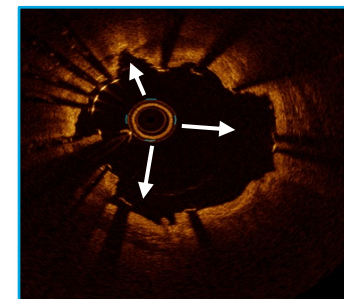
Lumen Area: 1.69 mm²

Post-IVL



Lumen Area: 4.58 mm²

Post-stent

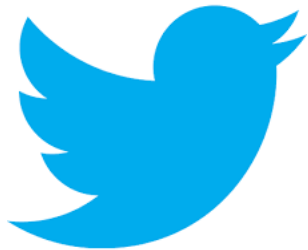


Lumen Area: 9.51 mm²
Stent Area: 8.01 mm²





Suivez le CNCH sur le Social Média!
#CNCHcongres



@CNCHcollege



shutterstock.com • 278925056

@CNCHcollege

Si vous voulez devenir Ambassadeur social média CNCH adressez-nous un email à cnch@sfcadio.fr